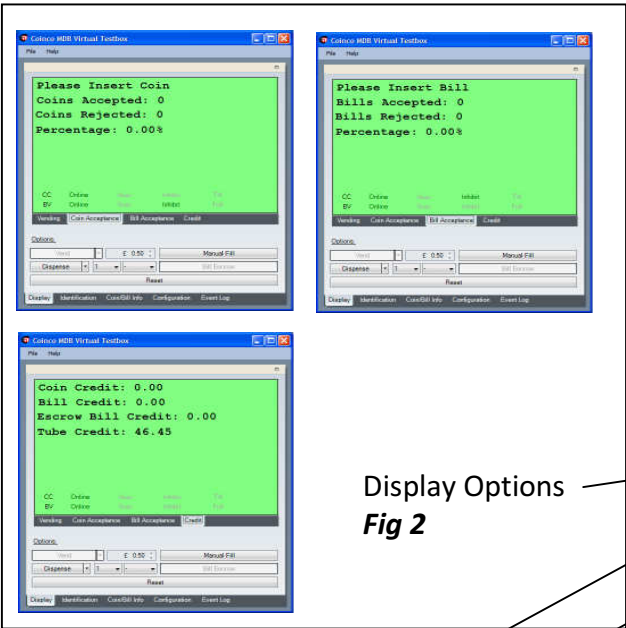


Coinco MDB Virtual Testbox Quick Guide

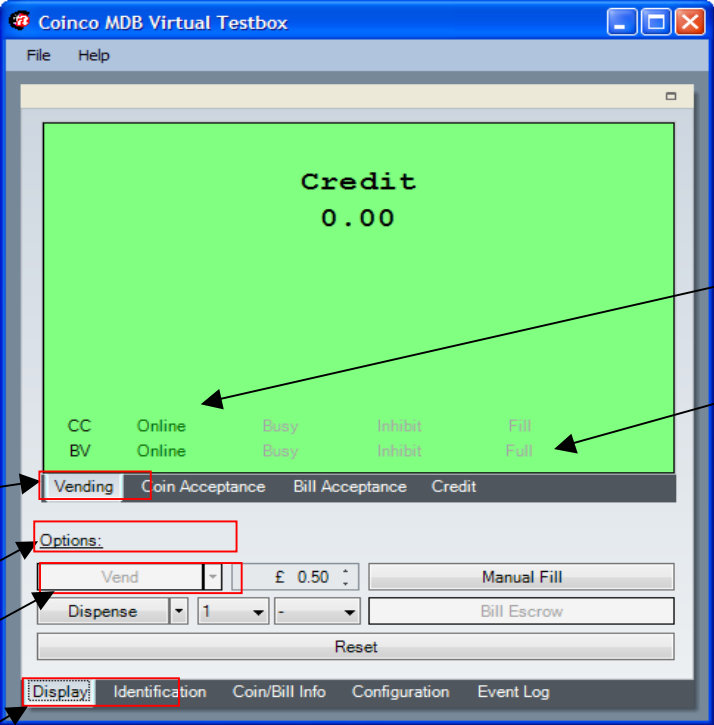
A cost-effective dedicated MDB Test Box



Screen Overview



Display Options
Fig 2



Coin Changer Status

Bill Validator Status

Other Options

Vending Options

Dispense Options

Main Options

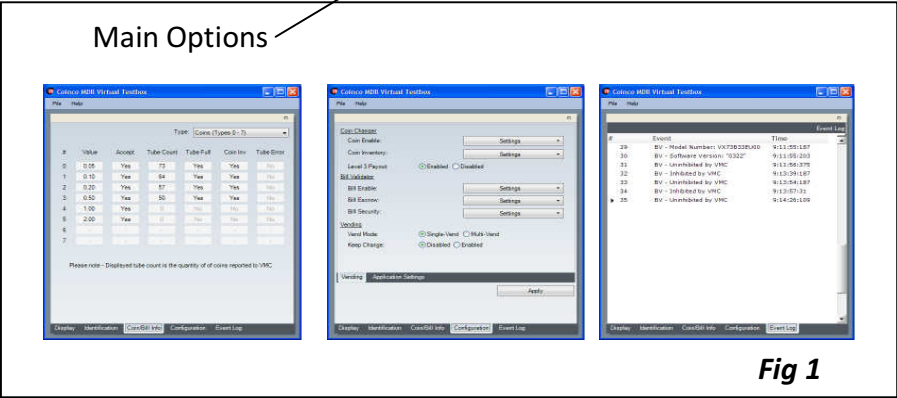
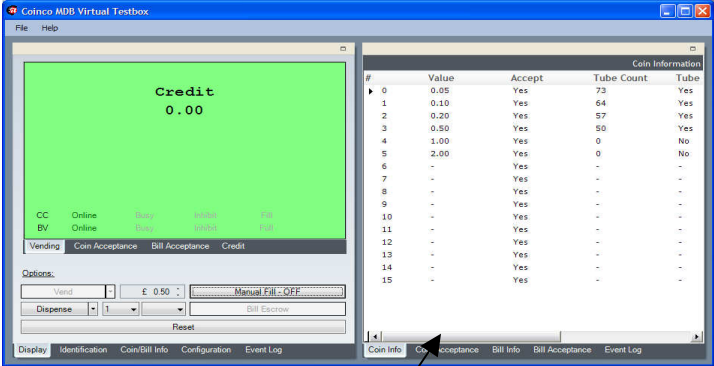


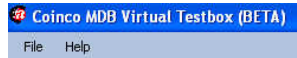
Fig 1



Extended View Options
Fig 3

Coinco MDB Virtual Testbox Quick Guide

File Menu Options



Print – Allows the following tables to be printed: Event Log, Coin Information, Coin Acceptance, Bill Information, Bill Acceptance.

Export to PDF – Allows the following tables to be exported to PDF: Event Log, Coin Information, Coin Acceptance, Bill Information, Bill Acceptance.

Export to Excel – Allows the following tables to be export to Excel: Event Log, Coin Information, Coin Acceptance, Bill Information, Bill Acceptance.

Clear – Allows the following tables to be cleared: Event Log, Coin Acceptance, Bill Acceptance.

Exit – Exits the application.

Main Options (Fig 1)

Display – Vending and coin/bill acceptance screen.

Coin / Bill Info – Display coin and bill information split into coin/bill types 0-7 and 8-15

Configuration – Allows for configuration of vending and application settings

Event Log – Displays an event log.



Display Options (Fig 2)

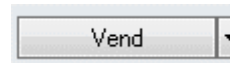
Vending – General vending functions

Coin Acceptance - Allows coin acceptance to be tested.

Bill Acceptance – Allows bill acceptance to be tested.

Credit – Displays credit broken down into coin, bill and bill in escrow. Also displays total credit in coin changer tubes.

Vending Options



There are two vending options available:

- 1.Vend – Vends the specified amount.
- 2.Fail Vend – Fails any vends requested.

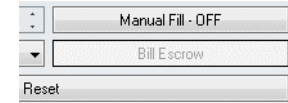
Dispense Options



There are four dispense options available:

1. By Quantity – dispense a specific number (up to 15) of a specified coin value.
2. By Value – dispense a specific value of a specified coin value.
3. By Coin – dispense all coins of a specified coin value.
4. All Coins – dispense all coin in the coin changer

Other Options

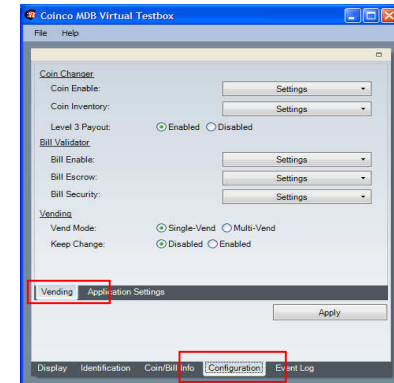


Reset – Resets the Virtual Test box and any connected peripheral.

Manual Fill – Allows coins to be inserted into a connected coin changer without accumulating credit.

Bill Escrow – Allows bill escrow to be tested when there is no coin changer connected.

Configuration Options - Vending



Coin Enable – Enable/Disable coin acceptance by MDB coin type (default all enabled).

Coin Inventory – Enable/Disable coin inventory by MDB coin type (default all enabled).

Level 3 Payout – When enable all coins are dispensed using the MDB dispense command

Configuration Options – Vending (cont)

Bill Enable – Enable/Disable bill acceptance by MDB bill type (default all enabled).

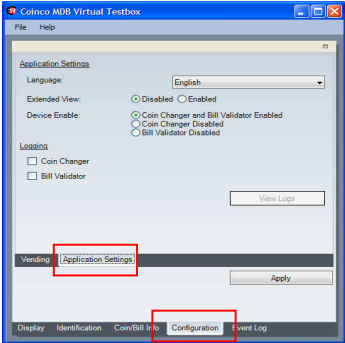
Bill Escrow – Enable/Disable bill Escrow by MDB bill type (default all enabled).

Bill Security – Enable/Disable bill security by MDB bill type (default all enabled).

Vend Mode – Select whether vending should be single or multi vend.

Keep Change – Determine whether unpaid coin credit should kept or lost at the end of a single vend.

Configuration Options – Application Settings



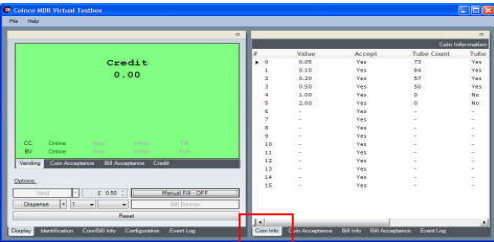
Language – Select language of application.

Extended View – Enable/Disable extended view. (Fig 3)

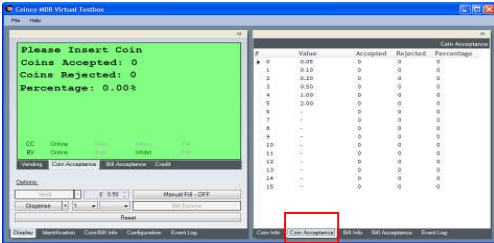
Device Enable – Enable communication with both a Coin Changer and Bill Validator or disable communication with either a Coin changer or Bill Validator.

Logging – Enable/Disable external low-level logging (by device).

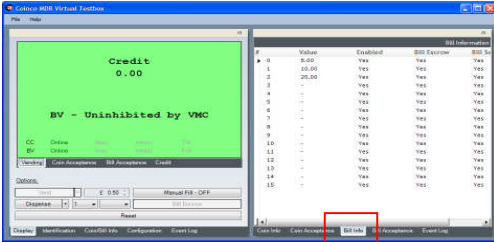
Extended View Options



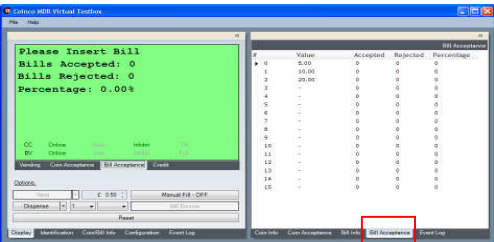
Coin Info – Displays coin information such as coin values, number of coins in the tubes, tube full and enable/inventory status.



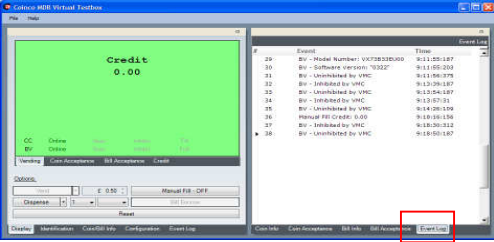
Coin Acceptance – Displays tabulated results of coin acceptance tests.



Bill Info – Displays bill information such as values, escrow/security status.



Bill Acceptance – Displays tabulated results of bill acceptance tests.



Event log - Displays an event log (identical information to main options event log).